

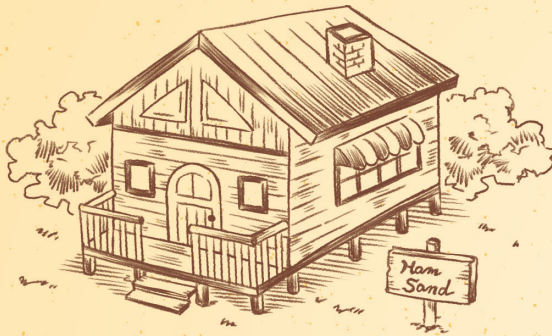


Ham's Sandwich Shop

- little little foodie -

Recipebook

Players **2-3** | Time **30min** | Age **8+**



This little building stands all by itself on the outskirts of town. It sells sandwiches, all lovingly made by the hamster chef that runs the place.

At first, the shop was the talk of the town. But after a few too many snacking and snoozing incidents, customer footfall began to dwindle and our little chef got quite disheartened.



But when customers did pop by, Chef Hamster had all the heart in the world. He worked his whiskers off, frying huge eggs, and washing veggies even bigger than himself.

He'd be on a roll, constantly changing a little of this and a little of that in every recipe in a desperate fur-vor to make customers happy. And yet nothing worked. Finally, his momentum got the better of him as he fell right on top of the bread!

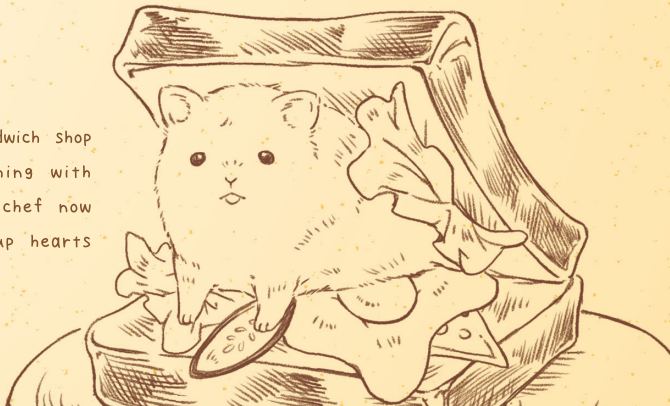


(Ahhh... I'm such a hamateur...)

Then, as the miniature culinary artist nervously raised his head...

The customers began to clap and cheer! His earnest charm had completely won them over.

Ever since then, the sandwich shop has been truly flourishing with its signature dish! Our chef now spends his days filling up hearts as he fills sandwiches.

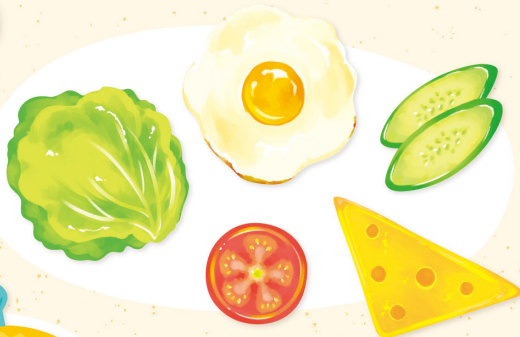


Now, get your mini chef hats on and help

Ingredients



6 Bread Tiles



40 Filling Tiles
(8 of each)



7 Gold Stars



1 Head Chef Token



4 Shadow Stars



1 Chef Kurumi
Seed Token



1 Chef Sakura
Seed Token



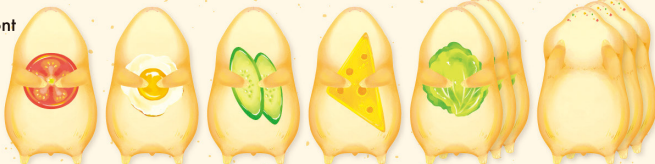
1 Chef Goma
Seed Token

the other hamsters finish their sandwiches!

Back



Front



10 Chef Tiles (Chef Kurumi)

Back



Front



10 Chef Tiles (Chef Sakura)

Back

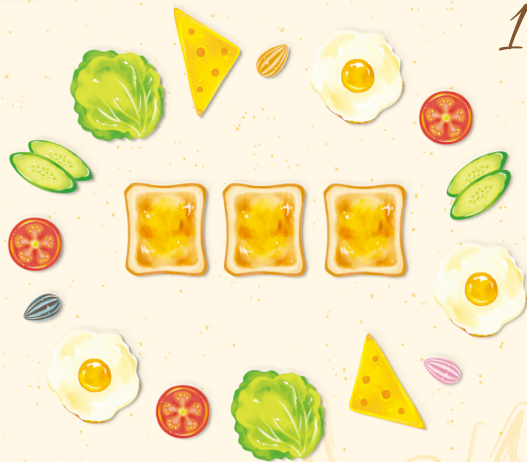


Front



10 Chef Tiles (Chef Goma)

Preparation



1 Ready the Kitchen

Following the layout in this image, place 12 random Filling tiles in a ring, 3 Bread tiles in the center, and a number of Seed tokens equally spaced, matching the number of players.

How you space out the Seed tokens will change depending on how many of you are playing.

● In Two-Player Games:



● In Three-Player Games:



2 Choose Your Chef

Choose your favorite Chef and take all the Chef tiles of that color. Shuffle them face down to form your deck. Take the top Chef tile from your deck and add it to your hand, keeping its belly (front) hidden from the other players.

*Your Seed token is the one that matches your Chef color.

3 Decide Where to Start

The player that most recently ate a ham sandwich will be the starting player, and then turns continue clockwise.

First, use the starting player's Seed token to decide where the Head Chef token will start: On "one, chew, three!" each player says a number between 0 and 6 (or 0-4 for a three-player game). Add the total up. This is where the Head Chef starts.

* If the total is 0, place the Head Chef on the twelfth Filling tile from the starting player's Seed token.

* Each Filling tile counts as 1 step forward. (Seed tokens do not count.)

* If the Head Chef passes a Seed token while moving to its start space, it doesn't cause that player to perform a Dive with their Chef tile. (See page 8.)

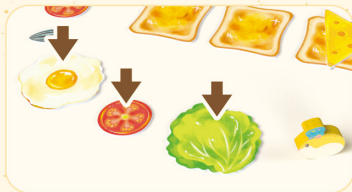
4 Add the First Filling

The player to the right of the starting player takes the Filling tile from under the Head Chef and places it on any Bread tile in the Kitchen.

Lastly, take one of the remaining Bread tiles each, and you're ready to start filling customer bellies!

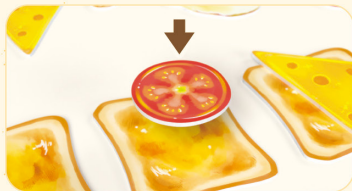
Method

Carry out the following steps every turn.



1 Move the Head Chef Token

Move the Head Chef to any one of the 3 Filling tiles in front of it. (Always move the Head Chef clockwise.)



2 Add a Filling to a Sandwich

Take the Filling tile that you moved the Head Chef onto and place it on top of whichever Bread tile you prefer, ending your turn.



3 Replenish the Fillings

Choose any Filling tile from the supply and put it back in the circle, in the empty space where the Head Chef started its movement that turn.



☀️ Dive in with Sunflower Seeds! ☀️

When the Head Chef passes over a Seed token, it's time for the Chef tiles to make their entrance. At the end of the turn, a player whose Seed token that the Head Chef passed over takes the Chef tile in their hand and gives it a little nudge to make it dive onto any of the sandwiches in the Kitchen! Then, take the top Chef tile from your deck and add it to your hand.

* Make sure the other players can't see what your Chef is holding by placing the tile face down.

* You may check the front of any of your own Chef tiles in the Kitchen at any time.

* If you don't have any Chef tiles left in your deck, nothing happens.

☀️ Watch out for Nibbles! ☀️

Chef tiles that are holding an ingredient in their paws are counted as that Filling in the sandwich. But these hamsters are real cheeky munchers! Some of the Chef tiles just can't stop their sneaky snacking.

Munch,
munch...



Nibbles the Chef

This tile eats the Filling directly beneath it, negating that Filling tile.

* Nibbles does not affect other Chef tiles.

Serving Up



1 Declare It Done!

A certain number of Filling tiles in front of the Head Chef token determine what needs to be in a sandwich to call it complete. At the beginning or end of your turn, when you think those Fillings are all on top of one of the Bread tiles, you can place the Bread tile in your hand on top to complete the sandwich. Tell everyone that you think it's ready by calling out "Done!" as you put your Bread tile down.

*When declaring it done at the end of your turn, you cannot complete a sandwich on which you placed a Chef or Filling tile during your turn.

*You can only declare a sandwich complete once per turn.

The number of Filling tiles that determine whether or not a sandwich is done depends on how many Gold Stars you have.

	If You Have 0 Gold Stars	If You Have 1 Gold Star	If You Have 2 Gold Stars
Two-Player Games	2 tiles in front	3 tiles in front	
Three-Player Games	2 tiles in front		3 tiles in front

2 Check the Fillings

Look at all the tiles in the sandwich you completed to check the Fillings are correct. If all the Fillings you needed are in there, you gain a Gold Star!

However, if even one Filling is missing, you've failed to stick to the recipe and you take a Shadow Star instead.

3 Make More Sandwiches

Take everything off the sandwich you declared complete, leaving the bottom piece of Bread in the Kitchen. Return the Chef tiles to each player. Shuffle the tiles returned to you and add them to the bottom of your deck. After completing a sandwich, the next player in turn order begins the game again.

How many stars?

The first player to get 3 Gold Stars wins!

If a player gets 2 Shadow Stars,
they are eliminated from the game.



